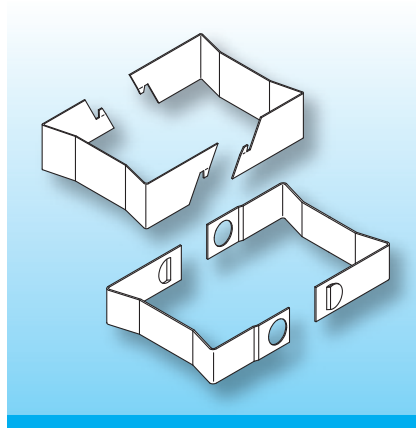


Latching-Clips FB-EF/E

Usually, glues such as Araldite are used to connect the ferrite cores. However the ferrite cores must be kept under constant pressure until the glue has hardened. A quicker and therefore more advantageous connection is achieved by using clips. Latching-clips FB are designed for use in auto/semi-automatic production.

When ordering please quote type and order-code.



Clips FK-E

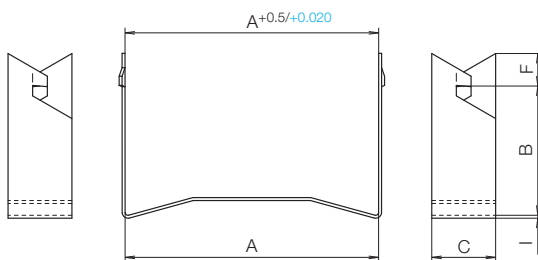
Clips FK are available for easily assemblable vertical or horizontal transformers.

Both types are made of stainless steel. Two clips are required per set. A drop of glue may be used to secure the ferrite core to the coil-former. This also reduces frequency noise.

Special materials/designs on request, dimensions in mm/inch.

Type I	Order-Code		A	B	C	D	I
FB-EF 8/sa	N0123-085	on request	8.2 / 0.323	4.3 / 0.169	2.0 / 0.079	1.3 / 0.051	0.20 / 0.008
FB-EF 10/sa	N0124-085	on request	10.3 / 0.406	5.3 / 0.209	3.0 / 0.118	1.6 / 0.063	0.20 / 0.008
FB-EF 12,6/sa	N0125-085	on request	13.1 / 0.516	6.8 / 0.268	3.0 / 0.118	1.6 / 0.063	0.20 / 0.008
FB-EF 16/sa	N0126-085	on request	16.7 / 0.657	8.5 / 0.335	4.5 / 0.177	2.8 / 0.110	0.30 / 0.012
FB-EF/E 20/sa	N0127-085	on request	20.8 / 0.819	10.5 / 0.413	5.5 / 0.217	3.1 / 0.122	0.30 / 0.012
FB-EF 25/sa	78843-085		25.8 / 1.016	13.1 / 0.516	6.5 / 0.256	3.4 / 0.134	0.30 / 0.012
FB-EF 32/sa	N0128-085	on request	32.9 / 1.295	16.7 / 0.657	8.5 / 0.335	4.0 / 0.157	0.30 / 0.012
FB-EF/E 20/sa	N0127-085	on request	20.8 / 0.819	10.5 / 0.413	5.5 / 0.217	3.1 / 0.122	0.30 / 0.012
FB-E 30/sa	78847-085		30.8 / 1.213	15.5 / 0.610	6.5 / 0.256	3.4 / 0.134	0.30 / 0.012
FB-E 36/sa	N0130-085	on request	37.0 / 1.457	18.6 / 0.732	10.0 / 0.394	4.3 / 0.169	0.40 / 0.016
FB-E 42/sa	N0131-085	on request	43.0 / 1.693	21.8 / 0.858	14.0 / 0.551	5.5 / 0.217	0.40 / 0.016
FB-E 55/sa	N0132-085	on request	56.0 / 2.205	28.4 / 1.118	16.0 / 0.630	6.1 / 0.240	0.40 / 0.016

Type I



© 01/2012 by NORWE GmbH

All dimensions in mm/inch

The permissible deviations according to DIN 16901 apply as tolerances

Warranties:
refer to Terms and Conditions of Sale

NORWE GmbH

Postfach 13 56
51691 Bergneustadt
Paulstraße 5, Pernze
51702 Bergneustadt
Deutschland
Telefon +49 (0) 27 63-807-0
Telefax +49 (0) 27 63-807-77
E-mail verkauf@norwe.de
Internet www.norwe.de
www.norwe.eu

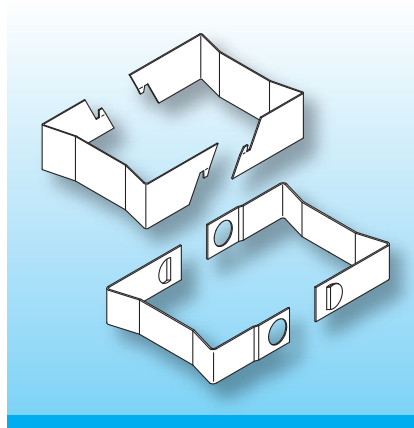
NORWE Inc.

P.O. Box 25 11
North Canton, OH 44720-0511
United States of America
Telefon +1-330 497-8113
Telefax +1-330 305-0592
E-mail usa@norwe.com
Internet www.norwe.com

Latching-Clips FB-EF/E

Usually, glues such as Araldite are used to connect the ferrite cores. However the ferrite cores must be kept under constant pressure until the glue has hardened. A quicker and therefore more advantageous connection is achieved by using clips. Latching-clips FB are designed for use in auto/semi-automatic production.

When ordering please quote type and order-code.



Clips FK-E

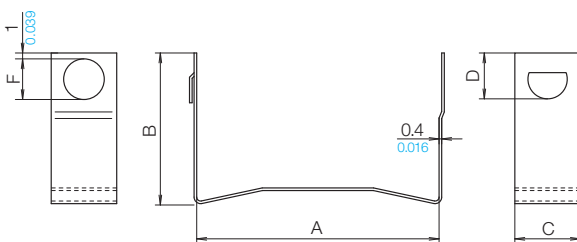
Clips FK are available for easily assemblable vertical or horizontal transformers.

Both types are made of stainless steel. Two clips are required per set. A drop of glue may be used to secure the ferrite core to the coil - former. This also reduces frequency noise.

Special materials/designs on request, dimensions in mm/inch.

Type II	Order-Code	A	B	C	D	F
FK-E 36/sa	78950-085	37.0 / 1.457	18.6 / 0.732	10.0 / 0.394	4.3 / 0.169	6.2 / 0.244
FK-E 42/sa	78951-085	43.0 / 1.693	21.8 / 0.858	14.0 / 0.551	5.5 / 0.217	6.2 / 0.244
FK-E 55/sa	78952-085	56.0 / 2.205	28.4 / 1.118	16.0 / 0.630	6.1 / 0.240	6.2 / 0.244

Type II



© 01/2012 by NORWE GmbH

All dimensions in mm/inch

The permissible deviations according to DIN 16901 apply as tolerances

Warranties:
refer to Terms and Conditions of Sale

NORWE GmbH

Postfach 13 56
51691 Bergneustadt
Paulstraße 5, Pernze
51702 Bergneustadt
Deutschland
Telefon +49 (0) 27 63-807-0
Telefax +49 (0) 27 63-807-77
E-mail verkauf@norwe.de
Internet www.norwe.de
www.norwe.eu

NORWE Inc.

P.O. Box 25 11
North Canton, OH 44720-0511
United States of America
Telefon +1-330 497-8113
Telefax +1-330 305-0592
E-mail usa@norwe.com
Internet www.norwe.com