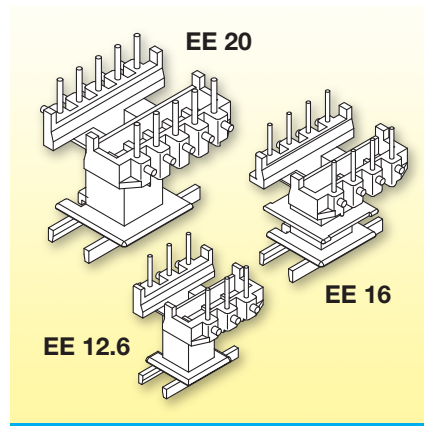


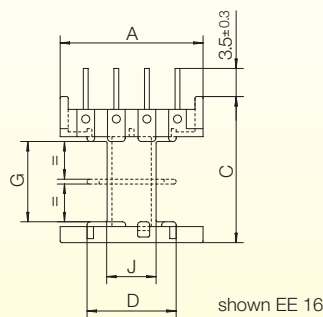
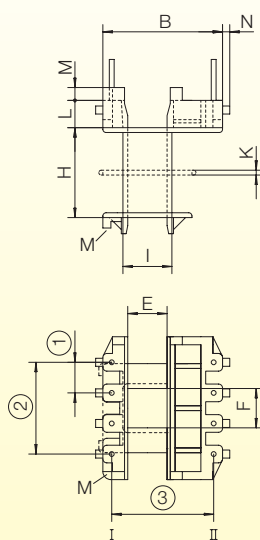
Latest Products 2018

Series EE vertical with longer creepage-dimensions

NORWE now is preparing to expand the series of EE/M coilformers vertical EE 12.6 to EE 25 with longer creepage-dimensions between ferrite and solder-pin.

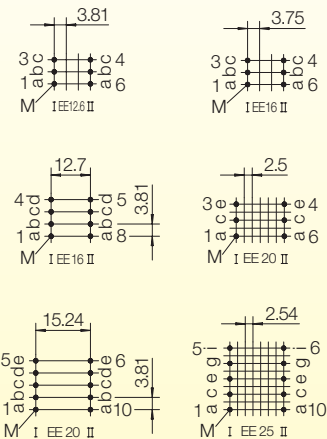


The design allows automatic winding also on NC winding machines. Special winding noses and also a wire routing provide tension-relief when binding on the wire. The coilformers have distance strips to avoid cold-solder joints into the PCB.



- Solder-pin
- 1*) z607/ua (73263-212)
 - 2*) z608/ua (73264-212)
 - 3*) z809/ua (73295-212)

Grid / View pin-side



Type	Code	A	B	C	D	E	F	G	H	I	J	K	L	M	N	①	②	③	*)
EE 12.6/1k/K9.5/9-6/3.81-cd/A RV250 nat.	N0169-106 on request	14.2	13.8	14.9	8.7	3.9	3.9	7.5	8.7	5.1	5.1	-	3.0	1.6	1.0	3.81	7.62	11.43	2
EE 12.6/2k/K9.5/9-6/3.81-cd/A RV250 nat.	N0176-106 on request	14.2	13.8	14.9	8.7	3.9	3.9	7.5	8.7	5.1	5.1	0.6	3.0	1.6	1.0	3.81	7.62	11.43	2
EE 16/1k/K9/9-6/3.75-cd/A RV250 nat.	09885-106 NEW	17.8	14.9	18.2	11.1	4.9	4.9	10.0	11.2	6.1	6.1	-	3.4	1.6	0.9	3.75	7.50	11.25	2
EE 16/2k/K9/9-6/3.75-cd/A RV250 nat.	09886-106 NEW	17.8	14.9	18.2	11.1	4.9	4.9	10.0	11.2	6.1	6.1	0.6	3.4	1.6	0.9	3.75	7.50	11.25	2
EE 16/1k/K10/9-6/3.81-d(12.7)/A RV250 nat.	09895-106 NEW	17.8	14.9	18.2	11.1	4.9	4.9	10.0	11.2	6.1	6.1	-	3.4	1.6	0.9	3.81	11.43	12.70	1
EE 16/2k/K10/9-6/3.81-d(12.7)/A RV250 nat.	09896-106 NEW	17.8	14.9	18.2	11.1	4.9	4.9	10.0	11.2	6.1	6.1	0.6	3.4	1.6	0.9	3.81	11.43	12.70	1
EE 20/1k/K12/9-8/5.0-eg/A RV250 nat.	N0196-106 on request	22.0	18.9	21.8	13.9	6.1	6.1	12.5	13.7	7.6	7.6	-	4.0	2.0	1.5	5.00	10.00	15.00	3
EE 20/2k/K12/9-8/5.0-eg/A RV250 nat.	N0197-106 on request	22.0	18.9	21.8	13.9	6.1	6.1	12.5	13.7	7.6	7.6	0.6	4.0	2.0	1.5	5.00	10.00	15.00	3
EE 20/1k/K11/9-8/3.81-e(15.24)/A RV250 nat.	10043-106	22.0	19.0	21.8	13.9	6.1	6.1	12.5	13.7	7.6	7.6	-	4.0	2.0	1.5	3.81	15.24	15.24	3
EE 20/2k/K11/9-8/3.81-e(15.24)/A RV250 nat.	N0199-106 on request	22.0	19.0	21.8	13.9	6.1	6.1	12.5	13.7	7.6	7.6	0.6	4.0	2.0	1.5	3.81	15.24	15.24	3
EE 25/1k/K13.5/9-8/5.08-ih/A RV250 nat.	N0202-106 on request	27.5	22.4	26.0	17.3	7.7	7.7	15.5	17.0	9.6	9.6	-	4.7	2.2	0.9	5.08	20.32	17.78	3
EE 25/2k/K13.5/9-8/5.08-ih/A RV250 nat.	N0203-106 on request	27.5	22.4	26.0	17.3	7.7	7.7	15.5	17.0	9.6	9.6	0.8	4.7	2.2	0.9	5.08	20.32	17.78	3

The coilformers are made in gr Polyamide PA66 of type A RV250 nat. (RTI long-range temperature +100°C). Pin material is tin bronze, tinned. Maximum solder temperature 350°C, 2 sec. Special materials – e.g. irradiated cross-linked – and designs on request, dimensions in mm.

© 07/2018 by NORWE GmbH

Warranties:
refer to Terms and Conditions of Sale

NORWE GmbH

Postfach 13 56
51691 Bergneustadt
Paulstraße 5, Pernze
51702 Bergneustadt
Deutschland

Telefon +49 (0) 27 63-807-0
Telefax +49 (0) 27 63-807-77
E-mail verkauf@norwe.de
Internet www.norwe.de
www.norwe.eu

NORWE Inc.

P.O. Box 25 11
North Canton, OH 44720-0511
United States of America
Telefon +1-330 497-8113
Telefax +1-330 305-0592
E-mail usa@norwe.com
Internet www.norwe.com



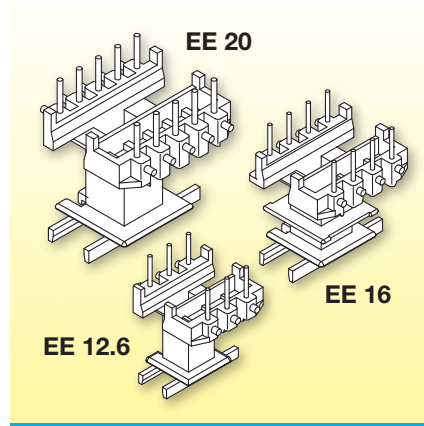
Valid version of
data sheet online

QR Online-Version

Neuheiten 2018

Serie EE Vertikal mit längeren Kriechstrecken

Aktuell plant NORWE eine Serienerweiterung der Spulenkörper EE/M Vertikal, EE 12.6 bis EE 25 mit verlängerter Kriechstrecke zwischen Ferritkern und Lötstift.



Alle Bauformen lassen sich rationell auf numerisch gesteuerten Wickelmaschinen verarbeiten. Spezielle Umwickelzapfen und die Drahtführung gewährleisten eine stets zugentlastete Anwicklung. AbstandsfüÙe zur Printplatte verhindern Blindlötungen durch abgedeckte Printlöcher.

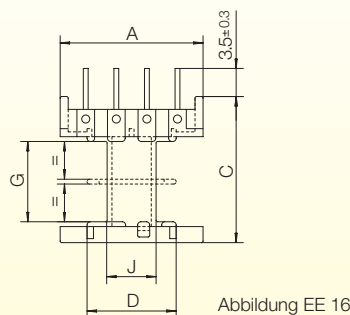
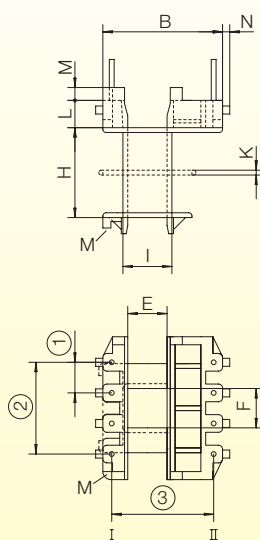
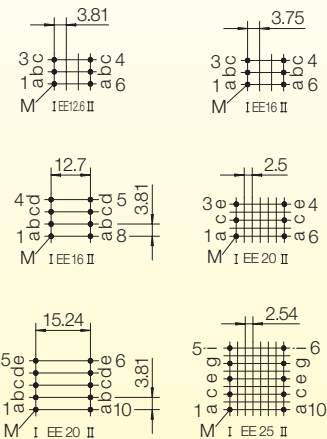


Abbildung EE 16

- Lötstift
- 1*) z607/ua (73263-212)
 - 2*) z608/ua (73264-212)
 - 3*) z809/ua (73295-212)

Rasterplan / Ansicht Lötstiftseite



Type	Code	A	B	C	D	E	F	G	H	I	J	K	L	M	N	①	②	③	*)
EE 12.6/1k/K9.5/9-6/3.81-cd/A RV250 nat.	N0169-106 auf Anfrage	14.2	13.8	14.9	8.7	3.9	3.9	7.5	8.7	5.1	5.1	-	3.0	1.6	1.0	3.81	7.62	11.43	2
EE 12.6/2k/K9.5/9-6/3.81-cd/A RV250 nat.	N0176-106 auf Anfrage	14.2	13.8	14.9	8.7	3.9	3.9	7.5	8.7	5.1	5.1	0.6	3.0	1.6	1.0	3.81	7.62	11.43	2
EE 16/1k/K9/9-6/3.75-cd/A RV250 nat.	09885-106 NEU	17.8	14.9	18.2	11.1	4.9	4.9	10.0	11.2	6.1	6.1	-	3.4	1.6	0.9	3.75	7.50	11.25	2
EE 16/2k/K9/9-6/3.75-cd/A RV250 nat.	09886-106 NEU	17.8	14.9	18.2	11.1	4.9	4.9	10.0	11.2	6.1	6.1	0.6	3.4	1.6	0.9	3.75	7.50	11.25	2
EE 16/1k/K10/9-6/3.81-d(12.7)/A RV250 nat.	09895-106 NEU	17.8	14.9	18.2	11.1	4.9	4.9	10.0	11.2	6.1	6.1	-	3.4	1.6	0.9	3.81	11.43	12.70	1
EE 16/2k/K10/9-6/3.81-d(12.7)/A RV250 nat.	09896-106 NEU	17.8	14.9	18.2	11.1	4.9	4.9	10.0	11.2	6.1	6.1	0.6	3.4	1.6	0.9	3.81	11.43	12.70	1
EE 20/1k/K12/9-8/5.0-eg/A RV250 nat.	N0196-106 auf Anfrage	22.0	18.9	21.8	13.9	6.1	6.1	12.5	13.7	7.6	7.6	-	4.0	2.0	1.5	5.00	10.00	15.00	3
EE 20/2k/K12/9-8/5.0-eg/A RV250 nat.	N0197-106 auf Anfrage	22.0	18.9	21.8	13.9	6.1	6.1	12.5	13.7	7.6	7.6	0.6	4.0	2.0	1.5	5.00	10.00	15.00	3
EE 20/1k/K11/9-8/3.81-e(15.24)/A RV250 nat.	10043-106	22.0	19.0	21.8	13.9	6.1	6.1	12.5	13.7	7.6	7.6	-	4.0	2.0	1.5	3.81	15.24	15.24	3
EE 20/2k/K11/9-8/3.81-e(15.24)/A RV250 nat.	N0199-106 auf Anfrage	22.0	19.0	21.8	13.9	6.1	6.1	12.5	13.7	7.6	7.6	0.6	4.0	2.0	1.5	3.81	15.24	15.24	3
EE 25/1k/K13.5/9-8/5.08-ih/A RV250 nat.	N0202-106 auf Anfrage	27.5	22.4	26.0	17.3	7.7	7.7	15.5	17.0	9.6	9.6	-	4.7	2.2	0.9	5.08	20.32	17.78	3
EE 25/2k/K13.5/9-8/5.08-ih/A RV250 nat.	N0203-106 auf Anfrage	27.5	22.4	26.0	17.3	7.7	7.7	15.5	17.0	9.6	9.6	0.8	4.7	2.2	0.9	5.08	20.32	17.78	3

Die Spulenkörper sind aus glasfaserverstärktem Polyamid PA66, A RV250 nat. (RTI Dauergebrauchstemperatur +100°C). Das Lötstiftmaterial ist Zinnbronze, verzinkt. Maximale Löttemperatur 350°C bis 2 Sekunden. Sondermaterialien – z.B. Strahlenvernetzung – und Sonderausführungen auf Anfrage, Abmessungen in mm.

© 07/2018 by NORWE GmbH

Gewährleistungshinweise siehe Verkaufs- und Lieferbedingungen

NORWE GmbH

Postfach 13 56
51691 Bergneustadt
Paulstraße 5, Pernze
51702 Bergneustadt
Deutschland

Telefon +49 (0) 27 63-807-0
Telefax +49 (0) 27 63-807-77
E-mail verkauf@norwe.de
Internet www.norwe.de
www.norwe.eu

NORWE Inc.

P.O. Box 25 11
North Canton, OH 44720-0511
United States of America
Telefon +1-330 497-8113
Telefax +1-330 305-0592
E-mail usa@norwe.com
Internet www.norwe.com



Aktueller Stand des Datenblattes online

QR Online-Version